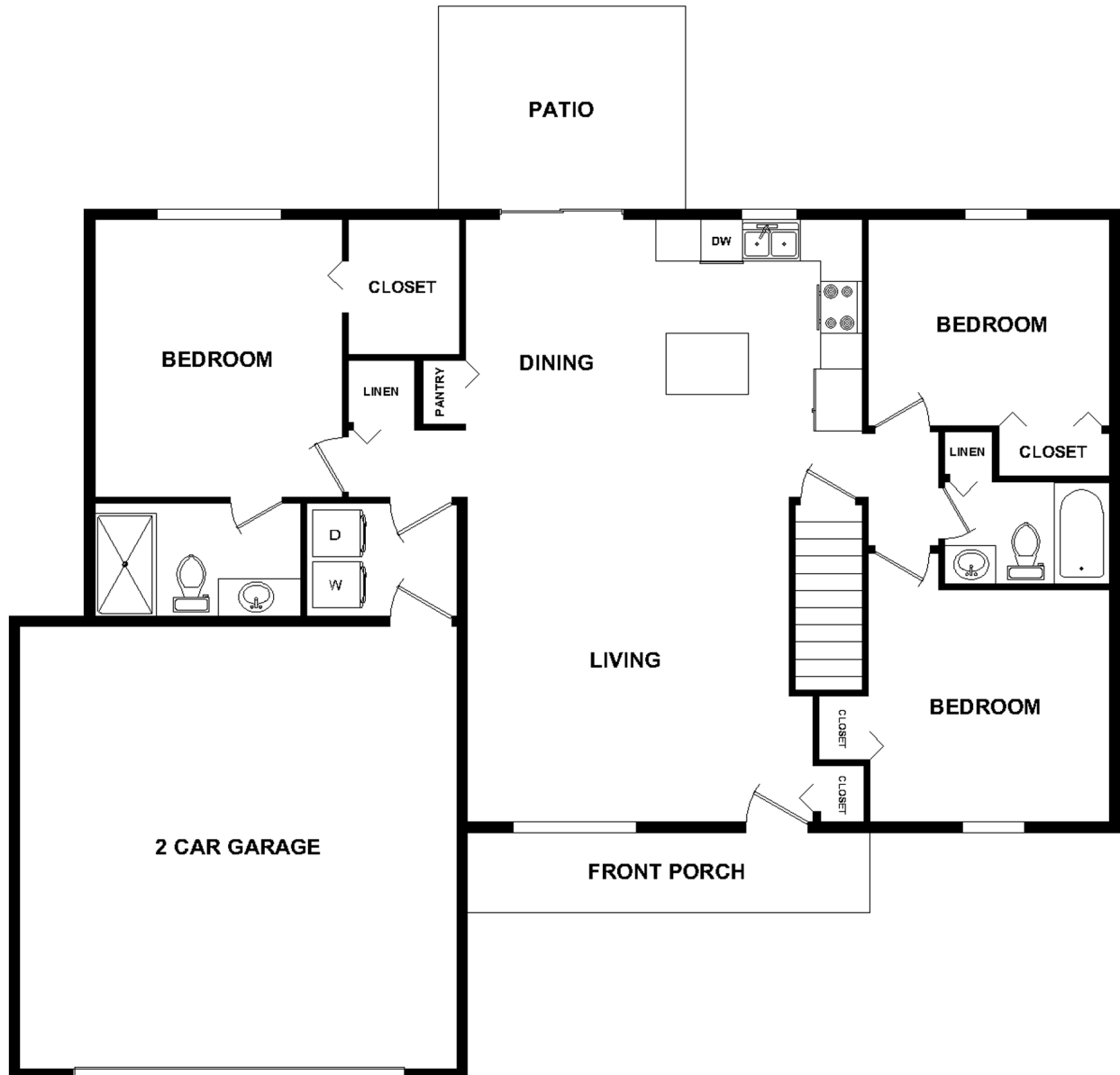


7642 Cinnamon Woods Trail

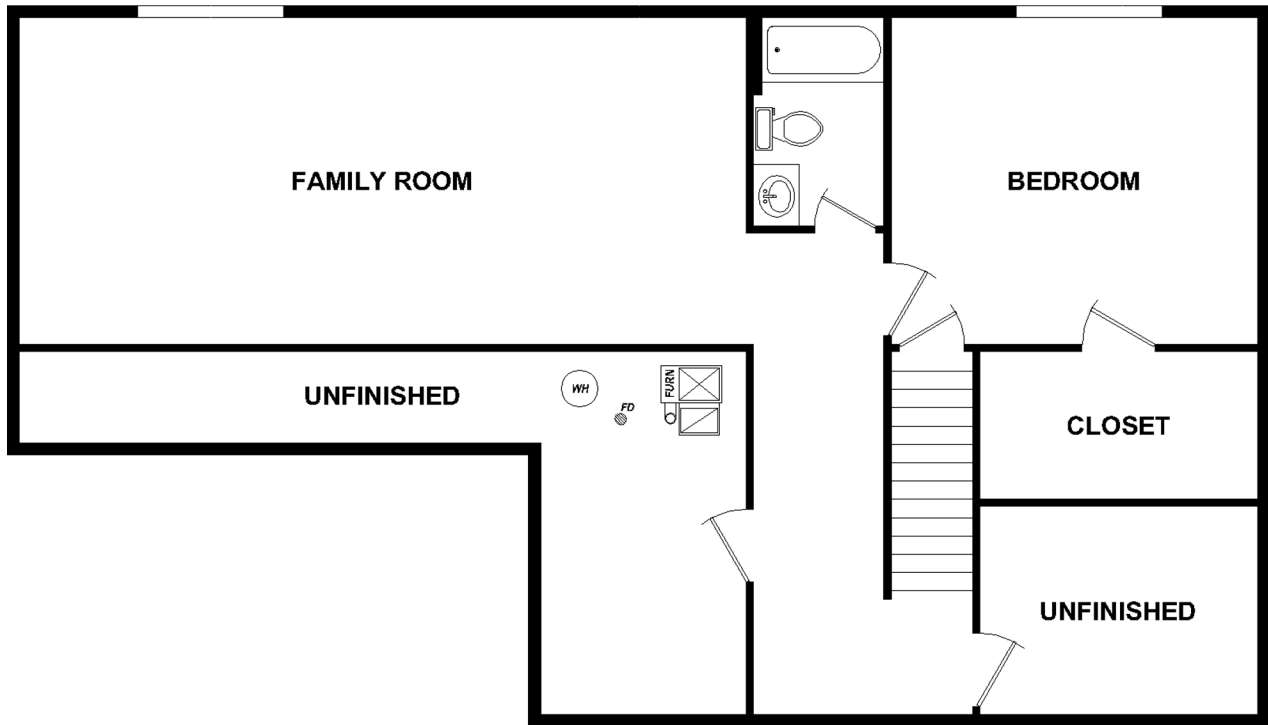
1,305 Sq Ft • 3 Bedrooms • 2 Baths • 2-Car Garage



This illustration is an artists' rendering based on Watts Homes & Construction's current proposed development concepts, which continue to evolve & are subject to change without notice. This illustration is not to scale. No guarantee is made that the facilities & features depicted will be constructed or that, if constructed, the number, type, size & location will be as depicted on this illustration. Access to & use of certain areas may be restricted. The common & surrounding properties will undergo continuing growth & development & conditions within sight may change. This illustration does not show the legal boundaries of the community; please refer to the recorded plats. Because Watts Homes & Construction does not own or control the land outside the boundary of the community, Watts Homes & Construction does not guarantee the accuracy of any matters or conditions shown on this illustration outside the boundary of the community and/or the current or future uses of those properties. © Watts Homes & Construction, Kalamazoo, MI

7642 Cinnamon Woods Trail

Optional Finished Lower Level: 1 Bedroom • 1 Bath



This illustration is an artists' rendering based on Watts Homes & Construction's current proposed development concepts, which continue to evolve & are subject to change without notice. This illustration is not to scale. No guarantee is made that the facilities & features depicted will be constructed or that, if constructed, the number, type, size & location will be as depicted on this illustration. Access to & use of certain areas may be restricted. The common & surrounding properties will undergo continuing growth & development & conditions within sight may change. This illustration does not show the legal boundaries of the community; please refer to the recorded plats. Because Watts Homes & Construction does not own or control the land outside the boundary of the community, Watts Homes & Construction does not guarantee the accuracy of any matters or conditions shown on this illustration outside the boundary of the community and/or the current or future uses of those properties. © Watts Homes & Construction, Kalamazoo, MI